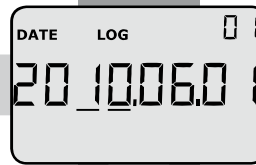
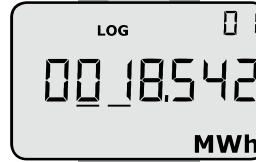




Consumed energy in kWh,
MWh or GJ



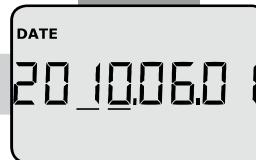
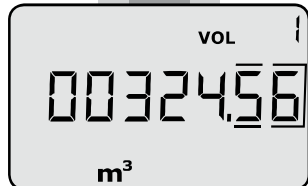
Latest target date



Energy count on latest target
date followed by energy
count on last year's target
date

Followed by monthly counts

Consumed district heating
water



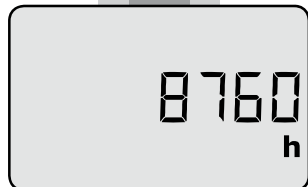
Latest target date



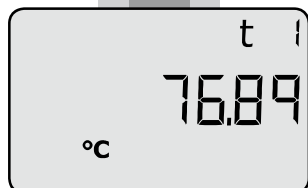
Volume count on latest
target date followed by
volume count on last year's
target date

Followed by monthly counts

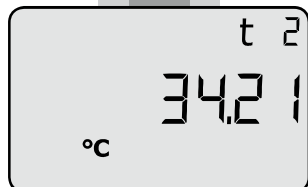
Number of operating hours



Current inlet temperature
(* Press to view yearly and
monthly average values



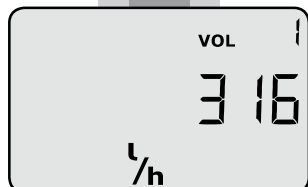
Current outlet temperature
(* Press to view yearly and
monthly average values



Current differential
temperature (cooling)



Current water flow
(* Press to see this year's
max. value as well as
yearly and monthly logging
values

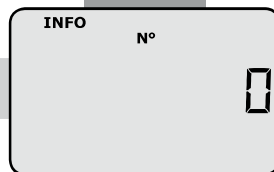
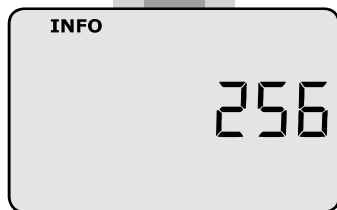


Current heat-flow rate
(* Press to see this year's
max. value as well as
yearly and monthly logging
values.
*Followed by totalized water
consumption on input A
and B.*

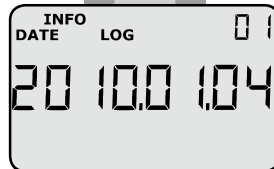




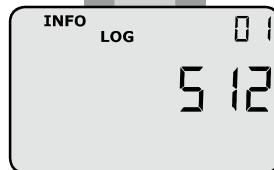
Current information code
(Contact your district heating company if the value differs from "0")



Reading of number of INFO code events

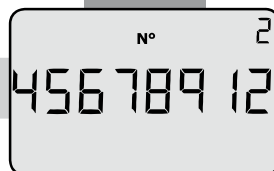
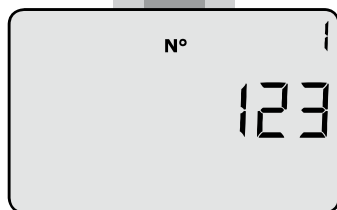


Data logger shows the date ...

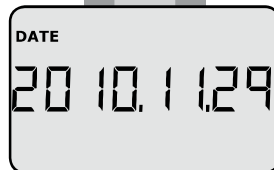


... and then the INFO codes of the latest 36 events

The eight most significant digits of the customer number



The eight least significant digits of the customer number. In this example the customer number is 12345678912



Current date



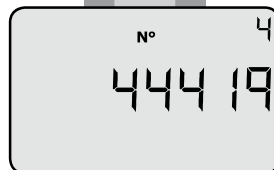
Current time



Target date displayed as month and day. In this example 1 June



The calculator's serial number



The calculator's program number.
In this example: Flow meter in outlet pipe, MWh and 100 imp/l.



Followed by the calculator's configuration number and software edition.

Display test

DDD = 213
(* DDD = 212)

Also see interactive user guides at www.kamstrup.com